



YSGOL GYFUN HEOLDDU
HEOLDDU COMPREHENSIVE SCHOOL



HEOLDDU COMPREHENSIVE SCHOOL
YSGOL GYFUN HEOLDDU
BARGOED, CAERPHILLY

SIXTH FORM

PROSPECTUS

2025-26

Heolddu Comprehensive School
Mountain Road, Bargoed, CF81 8XL
01443 875531
www.heoldducomprehensive.org.uk

*"A caring learning community that
promotes inclusivity and wellbeing
successfully..."*

Estyn, 2018

CROESO
CROESO
CROESO
CROESO

Our objective for sixth form provision at Heolddu is to develop well-informed, resilient, and aspirational learners who are ready to take the next step into higher education, training, or employment. We aid our students in fostering a lifelong love of learning and personal development. We build aspirations by providing experiences, advice, and guidance to ensure all our learners maximise their potential and become valued and valuable contributors to the local and global community. We facilitate the creation of an ethos based on mutual respect and success.

As a member of our sixth form, you will benefit from expert teaching, small classes, and first-rate academic and pastoral support. Our sixth form has an enviable record for ensuring that its students are successful in pursuing their chosen post-18 path. At Heolddu, you will be so much more than simply a name on a list: our students, whether new to the school or otherwise, are prized as individuals and are supported in all areas to become the people they truly wish to be.

We set high expectations for ourselves and our students. Our pupils achieve extremely well, with many moving on to study at Russell Group universities such as Bristol, Bath, Cardiff, Durham, and Warwick, to name but a few. Many of our students who choose not to progress to university secure places on highly competitive work training schemes with esteemed companies such as Welsh Water and GE Aviation.

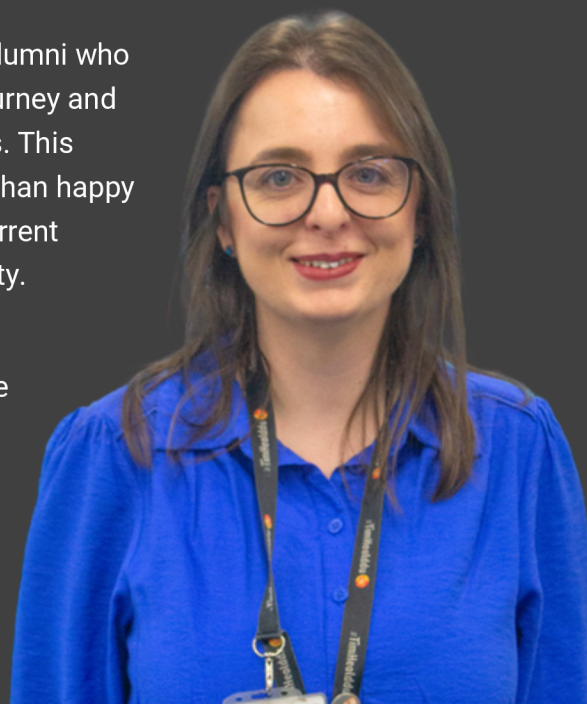
We generally offer traditional GCE A-Levels and GCE AS-Levels, although we also offer some popular and successful BTEC courses. In addition to these courses, all students will study towards the Level 3 Advanced Skills Baccalaureate Wales throughout Year 12 and Year 13.

As a sixth former at Heolddu Comprehensive School, you will have exceptional opportunities to get involved in extracurricular and supercurricular activities such as sport, music, drama, leadership opportunities, community charity work, and trips. These activities help establish well-rounded individuals and equally give our students a real sense of belonging and community participation. It is this, along with the commitment of all staff, that ensures our sixth form is a happy and inclusive environment for all our learners.

A testament to our work is the large number of alumni who regularly visit the school to update us on their journey and share their experiences with our current students. This network of former sixth formers is always more than happy to give advice and provide work experience to current learners – we really are part of one big community.

We hope that you will choose to continue your studies beyond GCSE at Heolddu Comprehensive School Sixth Form – a sixth form that provides a unique learning experience.

Miss A Price
Head of Sixth Form



our values

- Respect
- Aspiration
- Resilience

school life

■ Why Choose Heolddu?

At Heolddu Sixth Form, we are driven by creating unique learning experiences that deliver results for our students. After all, learning does not necessarily take place only in the classroom. We aspire to offer you a post-16 experience that shapes you for life outside of school. We provide a varied range of academic and vocational courses, mentoring, community work, and other extra-curricular activities. Our A-Level and BTEC results are consistently high and demonstrate the excellent teaching and learning that exist at post-16.

Pupils who wish to study in our sixth form traditionally need to gain at least five good GCSEs. The sixth form courses on offer run in partnership with our other local secondary schools in the Upper Rhymney Valley, and pupils are able to choose courses at these schools should they wish.

■ Expectations

The school day begins at 8:30 am, with the last formal lesson ending at 2:40 pm. All pupils are allocated form groups and are expected to be in school for registration at the start of the day and to attend all their lessons. During form periods, important information is distributed to pupils, and form tutors monitor attendance, and academic progress, and provide personal support for all pupils. Studying at Heolddu School Sixth Form is a full-time provision.



“Many sixth form pupils use prior knowledge well to explore and consider new concepts.”

Estyn, 2018



expectations

Responsibilities in the Sixth Form

As well as privileges and benefits there are, as you might expect, certain responsibilities. These come as a natural and practical part of being a young adult learner. Sixth Form students are expected to set a good example to the rest of the school. They are also expected to respond to requests for assistance from teachers, senior management or any member of the support staff.

Sixth Form students represent the school. They are expected to show visitors around, attend some evening functions and act as guides to new pupils. Students appointed to the Sixth Form Committee must attend meetings regularly and frequently. The Sixth Form Committee is appointed by a panel of governors and staff.

The Committee consist of:

- Head Student
- Deputy Student
- Sports Leaders
- Wellbeing Ambassador
- Charity Lead Ambassador
-

The Sixth Form Committee meet regularly and forms an important part of The Senedd. The committee are responsible for organising sixth form events such as the school prom and various fundraising activities.

SCHOOL UNIFORM EXPECTATIONS

SIXTH FORM

✓ **WHITE COLLARED SHIRT or BLOUSE**

✓ **BURGUNDY HEOLDDU SIXTH FORM TIE**

✓ **BLACK TROUSERS or SKIRT** (*No leggings, jeans, etc.*)

✓ **PLAIN BLACK SHOES**

✓ **PLAIN BLACK SOCKS or TIGHTS**

✓ **PLAIN BLACK JUMPER and/or CARDIGAN**



ADDITIONAL INFORMATION

- Suitable jewellery (*wristwatch, small earrings, or necklace*) for a professional environment.
- Suitable hair colour and style for a professional environment.
- Make-up suitable for a professional environment.
- No hoodies, coats, etc., to be worn in corridors.
- No phones or earphones to be used outside of the study room.

“Pupils, including the **sixth form leadership team,
make a strong contribution
to the **life and work** of
Heolddu.”**

Estyn, 2018

enrichment

■ Enrichment

Being a member of the Sixth Form can be a rewarding and enjoyable experience. How enjoyable it is depends on your contribution. The enrichment programme is designed to help students develop skills that academic study alone cannot teach. Participating in our enrichment programme will enable you to:

- Engage in sporting activities to enhance your lifestyle
- Enhance your personal development
- Participate in clubs and forums to explore your hobbies and personal interests
- Expand your knowledge and skills
- Strengthen your CV and improve your employment prospects, as well as develop competencies that will support a university application

■ Enrichment Activities

- Competitive and individual sports
- Enterprise and innovation activities
- Unique programmes for high-aspiring students, such as the Seren Hub and the University Step-Up scheme
- Fundraising activities
- Peer mentoring activities
- School Senedd
- Duke of Edinburgh Award
- STEM Ambassadors
- School Sports Council
- Drama



“The school provides helpful **guidance and **advice** to pupils relating to subject options, educational pathways and **future career choices**.”**

Estyn, 2018

community

Community

Our Sixth Form students work alongside younger year groups to raise funds and awareness for many local charities, as well as supporting national events such as Children in Need. Sixth Formers support younger pupils in class, lead reading workshops, and act as mentors and sports coaches. Through these opportunities, students contribute significantly to the school and the wider community while gaining knowledge and skills to support their career aspirations.

The school has close links with local supported accommodation for the elderly and runs regular events to support them, such as Christmas meals and ICT training for older people. The Sixth Form also has strong ties with the local branch of the Royal British Legion. Heolddu Sixth Form pupils run the Poppy Appeal for the branch every year and act as hosts for the annual Festival of Remembrance for the town.

Academic Peer Mentoring

All Sixth Form students have the opportunity to become peer mentors. A training programme is provided to help students develop the skills needed to encourage younger pupils and support their academic progress. Upon completion of the programme, mentors will sign up to literacy, numeracy, or digital communication support and will be assigned to various subject disciplines in school to provide assistance in lessons.



“The school provides valuable opportunities for pupils to develop their leadership skills, to contribute to decision making and to play a full part in the life of the school.”

Estyn, 2018

opportunities



■ Sporting Opportunities

There are senior prefects specifically appointed to develop sporting opportunities across the school, and pupils have access to successful senior sports teams that compete in events across the country. There are numerous opportunities to attain coaching awards and become sports leaders through programmes run in conjunction with Caerphilly County Council and the WRU. Pupils completing Level 3 sports courses will run sports activities for younger pupils and transition events for the cluster primary schools.

■ Duke of Edinburgh Award Scheme

All pupils in the sixth form are eligible to programme and can progress all the way up to Gold level. The award is made up of various sections:

- **Service:** This involves some form of beneficial service to the community in which you live for an hour each week over a minimum of 12 months.
- **Skill:** This involves the development of new or existing skills or hobbies for an hour a week over 6 or 12 months.
- **Physical:** This involves participation in some sport or other physical activity and developing your skill, technique, and knowledge for an hour a week over 6 or 12 months.
- **Expedition:** This involves two expeditions; a training expedition and a final assessed expedition. The expedition involves planning and undertaking 8 hours of journeying per day as part of a group, as well as camping and cooking as a self-sufficient group.

You will meet regularly with your mentor, who will create a bespoke programme with you in order to achieve this prestigious award.

**“Pupils are proud to
belong to the Heolddu
school community...”**

Estyn, 2018

progression

More Able and Talented Learners

Heolddu Comprehensive School is committed to supporting its high-aspiring students. We have a dedicated and unique programme of activities and events, which will enable you to stand out from other equally able students from across the country.

The programme includes:

- University-level courses.
- Motivational speakers.
- Higher education conferences organised by Oxford and Cambridge Universities.
- Student support with university entry exams.

The Seren Network

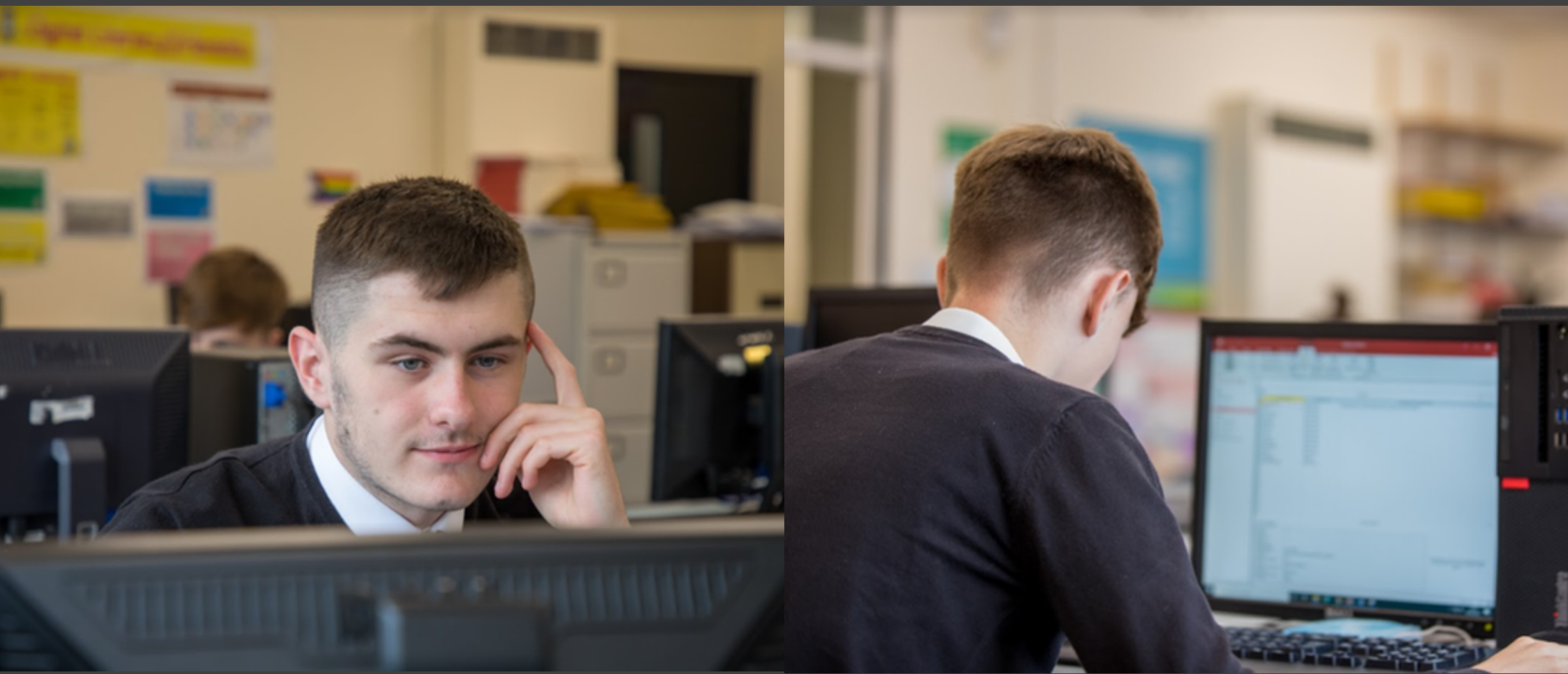
Heolddu Comprehensive School is proud to be part of the Seren Network – a network designed to support Wales's highest-achieving sixth formers in achieving their academic potential and gaining access to leading universities. Enrolment criteria are set by the Seren Network and are based on GCSE results. This elite programme is only available to MAT pupils with the aim of maximising their potential in their subjects.

Higher Education Support

Heolddu is fortunate to have access to the STEM Access support scheme that is organised by a former pupil attached to Imperial College in London. This is a support network that guides students in order to successfully apply to the best universities, including Oxbridge.

Unifrog

All sixth form students will be provided with a Unifrog account at no cost. This is a one-stop shop for all things careers and university-related. Students will complete their UCAS application via this platform with the support of Mr English. Students can research university courses at home and abroad and make shortlists of their preferred destinations.



“Many pupils use ICT skills appropriately to undertake research, create interesting presentations and produce spreadsheets.”

Estyn, 2018

stay in touch

 **HeoldduComprehensive@sch.caerphilly.gov.uk**

 **HeoldduComprehensive.org.uk**

 **01443 875531**

 **Heolddu Comprehensive School**

 **@HeoldduSixthForm**

 **@Heolddu6**

ACHIEVING EXCELLENCE TOGETHER

CYFLAWNI RHAGORIAETH GYDA'N GILYDD

#TÎMHEOLDDU 